

Savoy Emergency Notification System

Savoy's Emergency Notification System (ENS) provides fast and reliable communication of emergency and status information to potentially thousands of users connected over a LAN or the Internet. ENS is a lightweight utility that runs on Windows 98/NT/2K/XP systems and monitors messages delivered over many user configurable 'channels', each carrying various types of information. When critical information is received, ENS pops up on the users display showing the message:

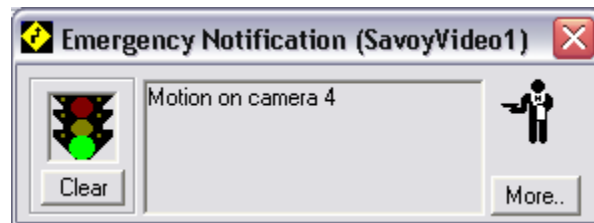


Figure 1 ENS Displaying an Event

When closed, ENS appears as an icon in the Task Bar Tray, with red/yellow/green lights indicating current status.¹

Besides handling text messages from authorized users, ENS is fully integrated with Savoy's WebEngine Servers that can monitor the status of numerous subsystems (security, access, video, etc.). The Savoy Development Client can author rule-based assertions that generate 'structured' messages to ENS channels. A 'structured' message is XML text that includes alert levels, associated icons, audio, as well as text. A structured message is intended to alert a user in the most clear and efficient way, using text, graphics, and sound.

¹ The foundation of ENS is based on the well-proven Internet IRC protocols compliant with RFC 1459, RFC 2812 and RFC 1413 published by the TCP Network Working Group of the Internet Engineering Task Force (IETF). Consequently, ENS is capable of scaling to support thousands of users across the Internet.

Expanded views of the ENS window (shown by clicking the 'More...' button) displays the recent history of all received messages:

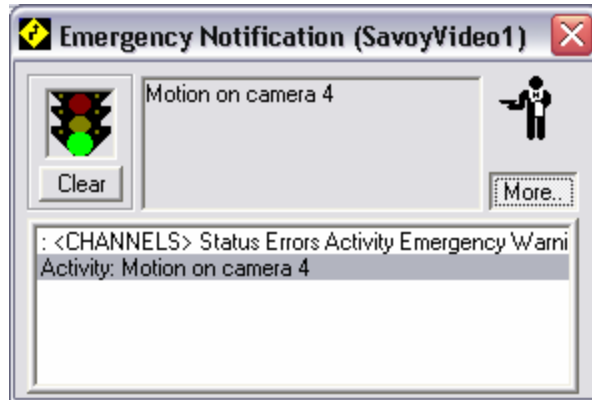


Figure 2 Expanded View showing the History of Recent Messages

By clicking on any entry in the history list, a dialog box is presented showing the details of the message:

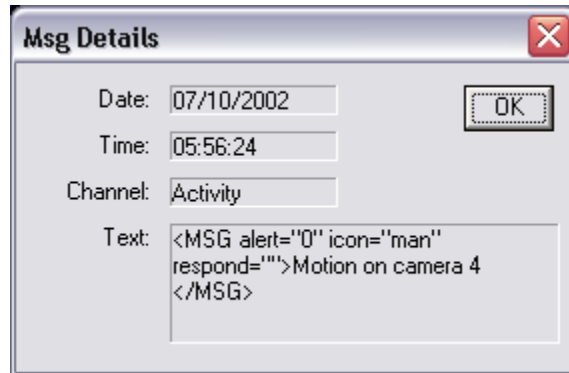


Figure 3 Dialog Box Displaying the Details of a Message

Under rule-based logic or operator control, users are capable of entering text, likely in response to some received message. When this occurs, a further expanded view is presented showing an input area for the user to enter text:

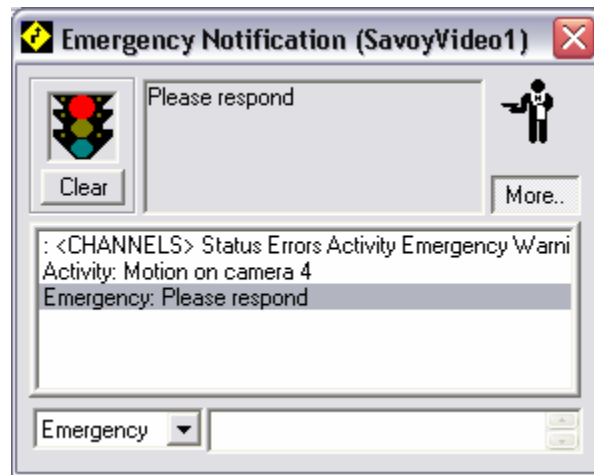


Figure 4 Expanded view showing an area for a User Response

Administrators: Configuring the ENS Application

Once installed, ENS can be configured by right-clicking on the Task Bar icon and selecting 'Setup':

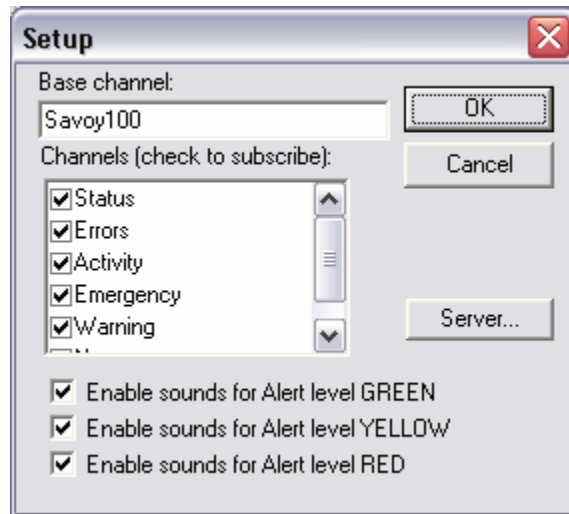


Figure 5 The ENS Setup Dialog

Here, the system administrator can configure the application to monitor one or more channels. By clicking the 'Server...' button, the administrator can enter the following information:

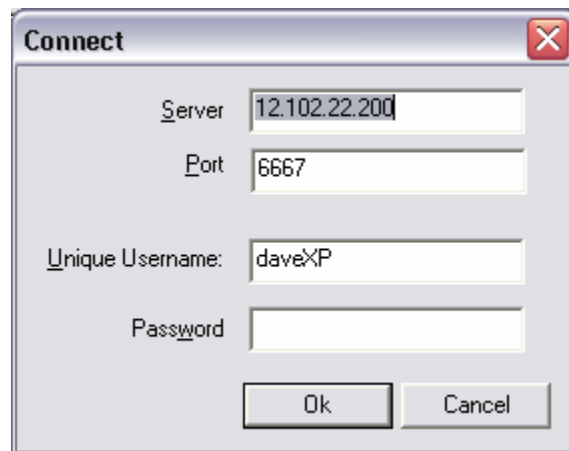


Figure 6 Setup Dialog for Connecting to the ENS Server

Note the Username MUST BE UNIQUE across all other users of the system. If not, the ENS application will fail to connect to the server.

Administrators and Developers: Developing Rules for ENS

Please refer to Savoy's documentation on how to load and register the ENS Domain Manager (called SaIrc) on the appropriate server.

Once loaded run the Savoy Development Client application and open a Layout connected to the server.

Create a new device as shown below:

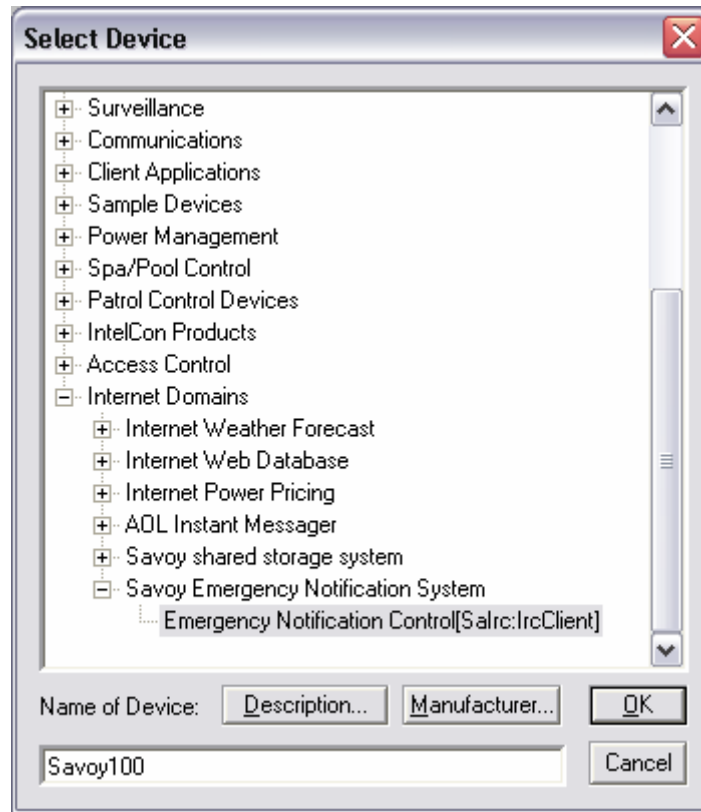


Figure 7 Create a new Device to Control the ENS System

The name of the device will be the name of the 'base channel' and must be unique for all ENS systems that connect to the IRC server. Normally, the IRC server will run on the same machine as the Savoy server, and so this requirement may be moot. However, the ENS system can actually run on any commercially available IRC server.

Once the device is created, the device appears on the Layout as shown below:

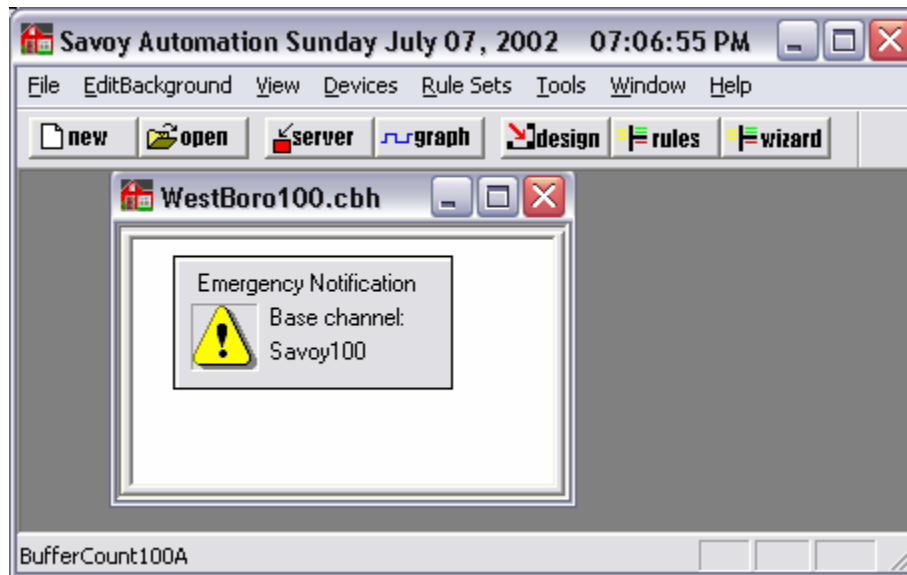


Figure 8 Savoy Development Client with a Layout containing an ENS Control Device

Right click on the icon and select 'Properties... ' to display the dialog that configures the device:

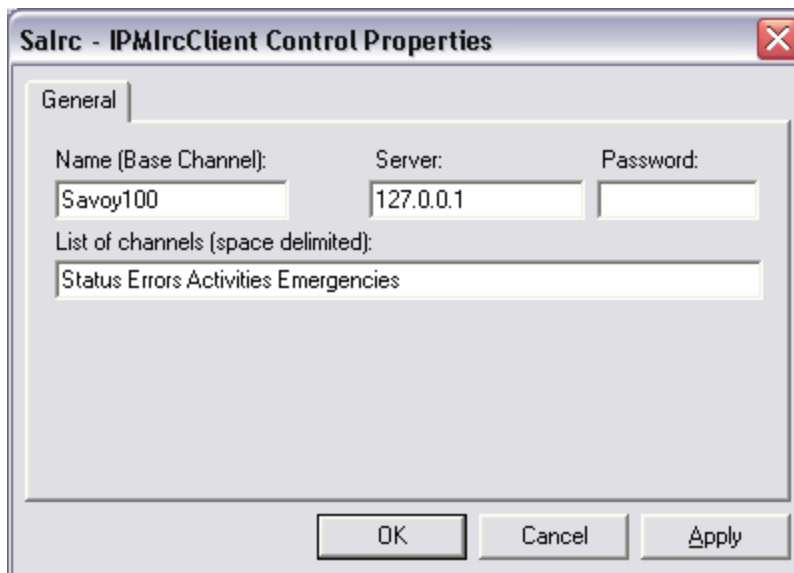


Figure 9 ENS Control Device Properties

Here, you can specify the IP address of the IRC server (127.0.0.1 for local machine), the Password, and a list of channels that you want for the ENS system.

Authoring rules is accomplished using the Graphical Rule Editor (Rules button on the Development Client). Rule components for the ENS device are edited using the following dialog:

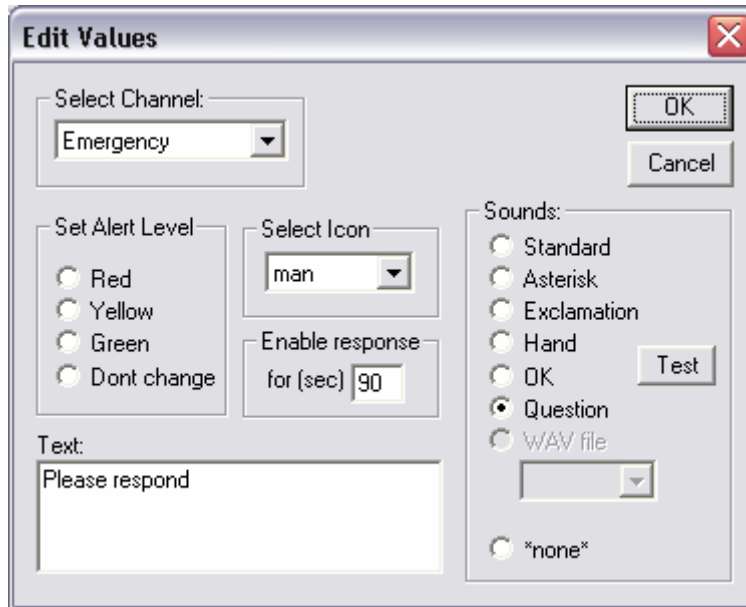


Figure 10 Condition and Assertion Dialog

By selecting the Channel, Alert Level, Message Icon, and Text, the developer can construct a structured message that will automatically be sent when the rule fires.

Refer to Savoy documentation regarding the use of the Graphical Rule Editor and the construction of rules.